

# **XE490DK**

## **Hydraulic Excavator**





## Advanced Configuration

### Ecological and economical

- ▶ Professional customized engine greatly improves fuel economy  
Hydraulic oil flow regeneration system ensures optimum machine performance
- ▶ Independent cooling system automatically adjusts fan speed

### Excellent after-sales service

- ▶ Global after-sales service system and quick response mechanism
- ▶ Real-time technical consultation and maintenance

### Convenient maintenance

- ▶ Easy maintenance design concept makes your maintenance done without dead angle
- ▶ Maintenance-free air prefilter,

### Multiple applications

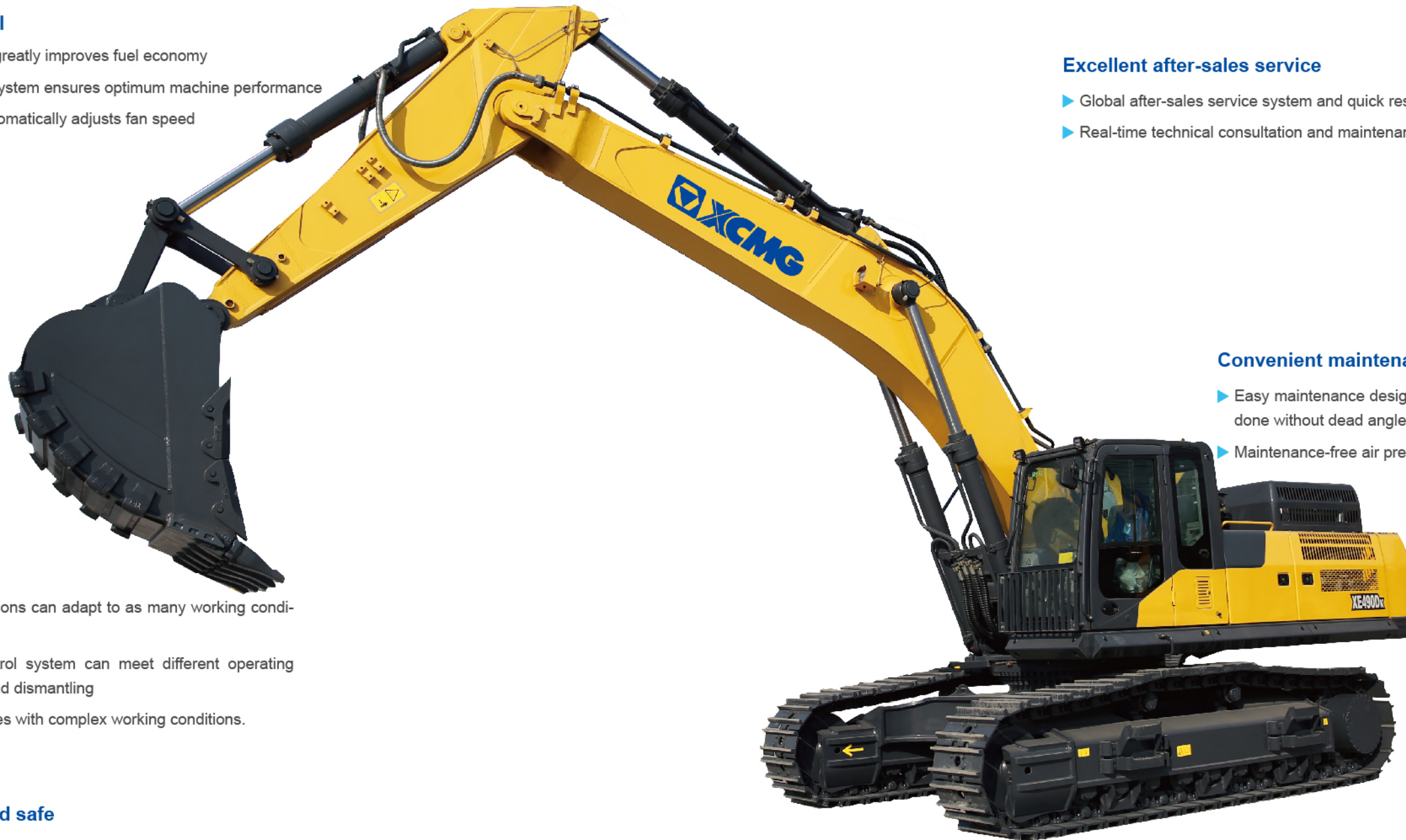
- ▶ Different boom, arm and bucket combinations can adapt to as many working conditions as possible
- ▶ Multi-functional intelligent work tool control system can meet different operating requirements such as digging, breaking and dismantling
- ▶ Instantaneous pressurization function copes with complex working conditions.

### Comfortable and safe

- ▶ Air Conditioner and Heater ensure the appropriate temperature
- ▶ Silicone rubber shock absorber is adopted in the cab
- ▶ Air-suspending seat equipped with electric heating function
- ▶ Integrated control panel and large display screen provide multiple information
- ▶ ROPS and FOPS Cab can improve cab safety

### Safe and durable

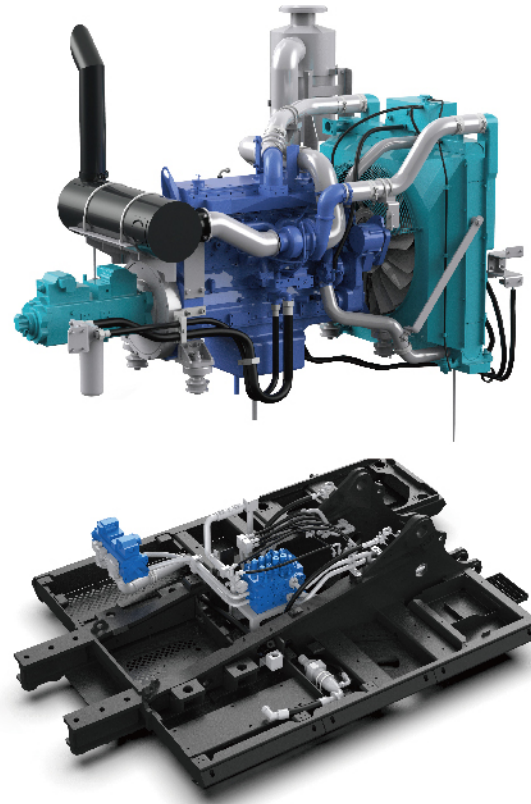
- ▶ Reinforced structural parts improves lifespan
- ▶ Upgrade undercarriage structure to improve load bearing performance
- ▶ Highly reliable with the industry's most advanced variable displacement piston pump





## Ecological And Economical

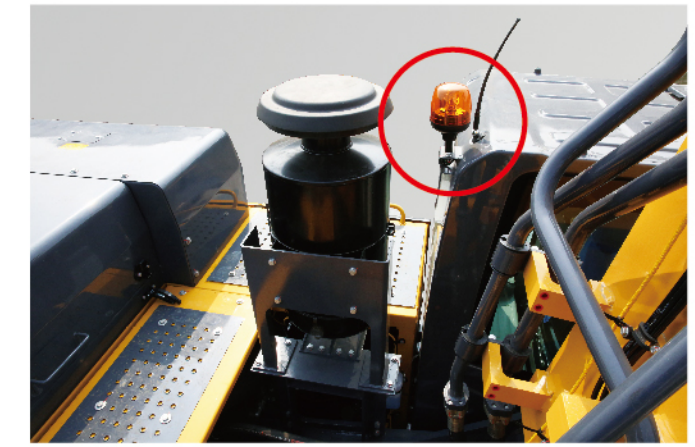
- ▶ The power system uses direct injection, 4-stroke, water-cooled, turbo-charged, air-cooled, six-cylinder engine. The engine uses high-efficiency HPI fuel injection technology to achieve split-cylinder control and full electronic control, which greatly improves fuel economy. An engine specially designed and manufactured for the working conditions of construction machinery. The customized torque curve has the characteristics of low speed and high torque, low fuel consumption and good economy. At the same time, it is in constant power mode in a certain speed range, so that the machine maintains a powerful power output at heavy load and low speed.
- ▶ The hydraulic system uses boom priority, arm priority, swing priority and arm hydraulic oil flow regeneration system to ensure the best working performance of the machine. At the same time, it optimizes the design of hydraulic lines to improve return pressure loss and system back pressure. Reduced energy loss. The use of new technologies such as flow regeneration energy-saving technology, bucket convergence and pressure reduction technology and valve core opening adaptive technology further reduce oil back pressure, improve digging force and improve heavy-duty operation efficiency.
- ▶ The product is equipped with a completely independent cooling system, which can automatically adjust the fan speed according to the water temperature, intake air temperature and hydraulic oil temperature, and reduce the energy consumption of the fan as much as possible under the condition of meeting the heat dissipation requirements.
- ▶ Autonomous control technology: dedicated electronic monitor and controller for independent intellectual property rights, self-programming controller program to finely match engine working speed and pump power, make full use of engine power, improve work efficiency and effectively reduce fuel consumption.



## Comfortable And Safe

### Comfortable and safe

- ▶ The cab with supercharged function can effectively prevent dust from entering the operation room, providing a clean working environment for the driver; the frame inside the cab is strengthened, the overall structural strength is increased, the pin holes are increased before and after, and the safety performance is improved; the cab is equipped with double-layer clamps. Glue glass, which effectively filters UV rays and has a high degree of protection.
- ▶ The imported silicone oil seals the shock absorber, improves the rigidity of the cab floor, reduces the amount of cab shaking, and reduces the operator's operational fatigue.
- ▶ Warning function: The rotating warning light on the top of the cab can visually remind nearby people, and the high-volume buzzer can provide an audible reminder to nearby people.



- ▶ Wide field of vision: The whole vehicle is equipped with 4 convex rearview mirrors to realize 360° visualization; the night work light adopts high brightness, low energy consumption and can work for 20000h LED lights.
- ▶ The multi-function color liquid crystal display provides operators with comprehensive and easy-to-read machine information, comprehensively monitors the working status of the engine and hydraulic system, and can query various operation and fault diagnosis information of the machine.
- ▶ Air conditioner and heater with double-stage air filtration: the ambient temperature inside and outside can be detected by the sensor and it can be automatically adjusted to a comfortable one. With the adjustable air vents at different positions, it can provide a comfortable environment for the operators.





- ▶ The hydraulic system adopts the most advanced variable displacement piston pump in the industry, which has the characteristics of superior performance and long-lasting output. The high-pressure main oil circuit and the return oil pipeline are all made of steel pipe and buckled hose structure, which is resistant to impact and high reliability; the cylinder is enhanced. Support ring structure, the life is greatly improved, effectively avoiding oil leakage, pulling cylinder and other faults.
- ▶ The electrical components adopt aeronautical connectors, which have good conductivity, high protection level and high reliability.

## Maintenance And Service

- ▶ Accessible maintenance design reduces maintenance time by 10%. Integrate electrical box, air filter, diesel filter, oil filter and pilot filter to make maintenance and replacement convenient.



- ▶ The hood is designed with a gas spring-assisted side-up structure and a large opening angle for easy access to the engine and radiator.
- ▶ A protective net is arranged on the outside of the radiator to effectively prevent the inhalation of flying debris and the like, and the disassembly is convenient and the cleaning is easier.
- ▶ A wide range of after-sales service system and quick-response rescue mechanism can ensure that you use machine at ease.



## Reliable And Durable

- ▶ The sturdy lower travel body can meet the needs of heavy-duty operation, and its durability, reliability and maneuverability are higher. The enhanced four-wheel belt is equipped with excellent performance and more reliable quality. It strengthens the walking frame and X-beam structure and improves the horizontal. The strength of the section, the stress of the dispersion body, can be used for harder work.



- ▶ The H-shaped boom and the arm are all integrated with a cast structure, which has uniform force and long service life. The contact surface is made of high-hardness T-sleeve, which greatly reduces surface wear and prolongs the use time. Large-capacity rock bucket The double arc design structure reduces the resistance during excavation, makes it easier to load and unload materials, and adopts the Ultralok series of teeth produced by the famous American company Esko. It has stronger penetrating power, better wear resistance and improved service life. More than doubled.



## Multiple Applications Conditions

The independently developed multi-functional intelligent work tool control system can meet different operating requirements such as digging, breaking and dismantling, and its working condition adaptability is further strengthened.

It is designed with instantaneous boost function, and you can immediately raise the boom speed or the travel traction by pressing this button.

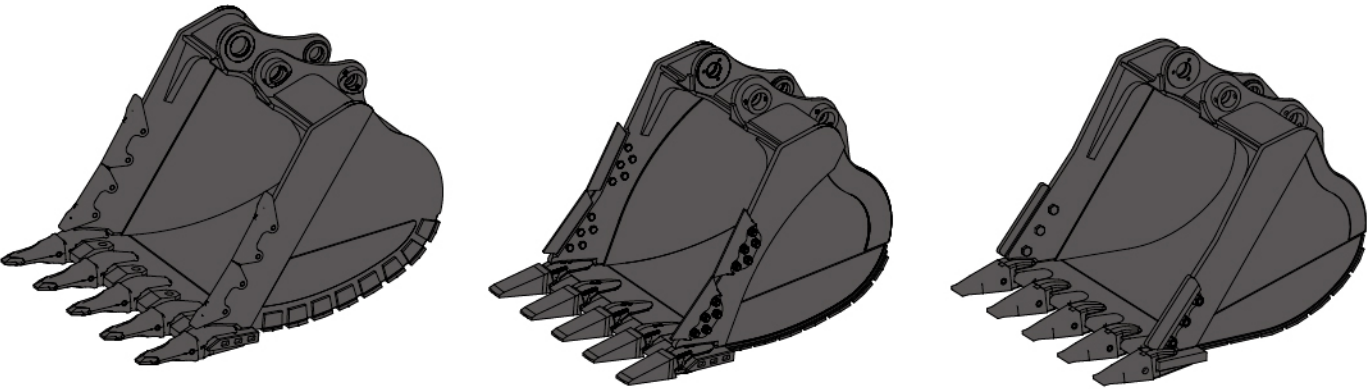




**Bucket Configuration Table**

Bucket Configuration table				XE490D
boom:6670mm		arm:2400mm		
type	width mm	capacity m³	weight kg	
strengthen bucket	2000	3.1	2540	○
boom:7060mm		arm:3380mm		
type	width mm	capacity m³	weight kg	
rock bucket	1717	2.3	2100	■
strengthen bucket	1879	2.5	2138	○

■ :Suitable for materials with a density less than 2100 kg/m 3 or less  
 ○ :Suitable for materials with density less than 1500 kg/m 3 or less



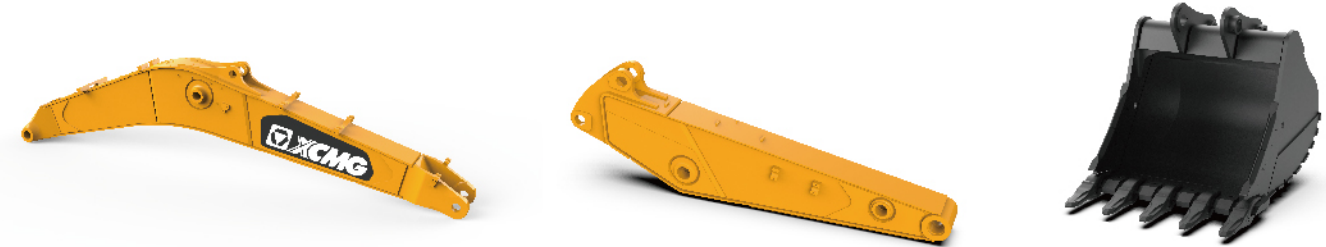
3.1m3strengthen bucket      2.3m3rock bucket      2.5m3strengthen bucket

**Combination Methods**

Combination method one



Combination method two



Combination method three





Standard Equipment

	Name of equipment	XE490DK
Engine	Engine model	QSM11
	Emission level	National III
	Automatic preheating	
	Oil-water separator with water level indication sensor	
	Radial seal air cleaner	
	Cooling components of 50°C high temperature environment	
	Radiator dust screen	
	Fuel marker	
	Independent cooling module	
	Fuel breather valve	
	Air pressure difference indicator	
	Automatic idle speed	
	Oil bath type air prefilter	
	Boom/arm flow regeneration	
	Reverse rotation damping valve	
Hydraulic system	Automatic rotation parking brake	
	Straight hydraulic circuit	
	Boom priority valve	
	Rotary logic valve	
	Hydraulic oil ISO VG 46	
	Rotary anti-sway valve	
	Spare valve disc	
Cab and interior trim	Gauge pressure monitoring	
	Pressurized cab	
	Fully adjustable mechanical suspension seat	
	Adjustable seat armrest	

	Seat belt (51 mm [2 "] wide)
	Openable windscreen with auxiliary device
	Front windshield divided by 70/30 ratio
	Double laminated windshield and other toughened windows
	Sliding door upper window
	Bi-directional air outlet air conditioner with defroster (automatic type) (pressurization function)
	Color liquid crystal display capable of displaying warning information, filter / liquid replacement information and working hours
	Control handle
	Travel control pedal with detachable manual control lever
Cab and interior trim	Two stereo speakers
	Beverage cup holder
	Coat and hat hook
	Cleanable floor mat
	Retractable seat belt (51 mm [ 2 " ] wide)
	Air conditioning system
	High and low gears shift
	One-key boost mode
	Reserved switch for auxiliary equipment
	Shade curtain
	Top sunroof
	Intermittent multi-gear wiper
	Cup holder/envelope
	Radio receiver
	Driving door locks and cabin locks
Safety and security configuration	Alarm horn
	Isolation plate between engine and oil pump chamber
	Rear window emergency exit
	Battery circuit breaker



Safety and security configuration	Boom and arm retaining valve
	Overheat alarm
	Safety handrails and pedals
	Rotary alarm lamp
	Anti-skid plate/anti-skid paste
	Hydraulic safety locking lever
	Emergency escape hammer
Chassis system and shield	Left and right rearview mirrors
	Falling object protective structure (FOPS)
	Emergency stop switch of engine
Working decive	Bottom frame traction ring
	Protective device kit: chassis bottom sealing plate, walking motor sealing plate
	Extended chassis
Electrical system	Boom6.67m
	Battery (2×650CCA)
	70A Alternator
	9KW start motor
	Travel alarm
	24V Cigar lighter
	5V USB interface
Lamp	24V Power interface
	Boom working lamp at left and right side
	Working lamp installed on the right side of storage box
	Lamp inside the cab
Counterweight	Front working lamp installed on the top of cab
	9.2t Conuterweight
Technology	XEICS intelligent system

Technology	Data link socket
Lubrication system	Arm concentration lubrication

## Optional Equipment

	Name of equipment	XE490DK
Engine	Oil-water separator with heater (24V)	
	Oil and water quick discharge device	
	arm concentration	
	Fuel refueling pump 50L/min	
	Fast fill fuel system	
Hydraulic system	Air prefilter	
	Auxiliary hydraulic valve	
	Hydraulic buffer valve	
	Hydraulic pipeline:quartering hammer	
	Hydraulic pipeline:cylinder and thumb pliers	
	Hydraulic pipeline:Explosion-proof valve line and cylinder	
	Hydraulic pipeline:quick connector	
Hydraulic system	Hydraulic pipeline:hydraulic shear	
	Hydraulic pipeline:hydraulic vibrating tamper and high frequency	
	braker	
	Hydraulic pipeline:hydraulic grip	
Hydraulic system	Operating modes switch	
	Hydraulic oil ISO VG 32 ,68	
Cab and interior trim	Heated air suspension seat with cushion	
	Onboard oxygen device	
Safety and security configuration	Fire extinguisher	
	Explosion-proof valve for boom and arm pipeline	



Safety and security configuration	700mm (28 ") three-rib track plate
	800 mm (31 ") three-rib track plate
	Track rubber block
	Counterweight rearview mirror
	Rear view monitor camera
Working device	600 mm (24 ") three-rib track shoe
	Boom 7.06m
	Arm 3.38m
	2.3m³ Rock bucket
	2.5m³ Strengthened bucket
	Ripper
	Quick connector
	Quartering hammer
	Hydraulic thumb pliers
	Scarifier
	vibrating tamper
	Hydraulic shear
	Grip
	High frequency braker
	Clam shell bucket
Electrical system	Plum-blossom shape grab bucket
	Sreen-type bucket
	Arm2.9m
	Bucket 2.5m³ strengthen bucket
	12V Cigar lighter
	Camera
	Rear working lamp installed on the top of cab

**Main Specifications**

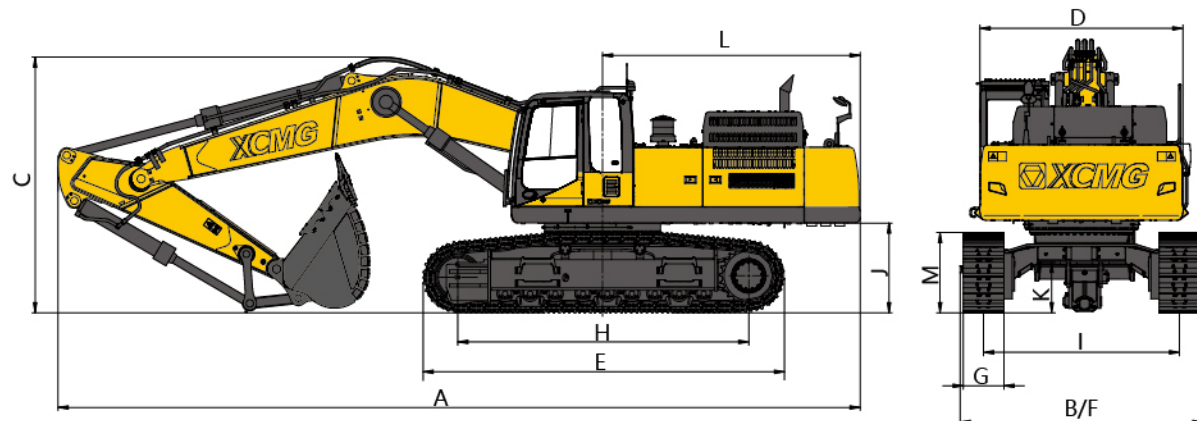
Item	unit	Main specifications
Model	/	XE490DK
Operating weight	Kg	48100
Bucket capacity	m³	2.3-3.1
Engine	Model	QSM11
	Direct injection	√
	Four strokes	√
	Water cooling	√
	Turbo-charging	√
	Air-to-air intercooler	√
	No.of cylinders	6
	Rated power	kw/rpm 280/2000
	Maximum torque/speed	N.m/rpm 1898/1300
	Displacement	L 11
Main Performance	Travel speed(H/L)	km/h 5.4/3.2
	Swing speed	r/min 9.2
	Gradeability	° 35
	Ground pressure	kPa 85
	Bucket digging force	kN 301
Hydraulic System	Arm digging force	kN 248
	Maximum tractive force	kN 338
	Main pump	/ 2
	Rated flow of main pump	L/min 2×360
	Main safety valve pressure	MPa 34.3/37
	Travel system pressure	MPa 34.3
	Swing system pressure	MPa 31
	Pilot system pressure	MPa 3.9



Item		Unit	Parameters
Oil Capacity	Fuel tank capacity	L	725
	Hydraulic tank capacity	L	430
	Engine oil capacity	L	38
Standard	Length of boom	mm	6670
	Length of arm	mm	2900
	Bucket capacity	m <sup>3</sup>	2.5
Optional	Length of boom	mm	7060
	Length of arm	mm	3380
	Bucket capacity	m <sup>3</sup>	2.3(Rock bucket) 2.5(Strengthen bucket)

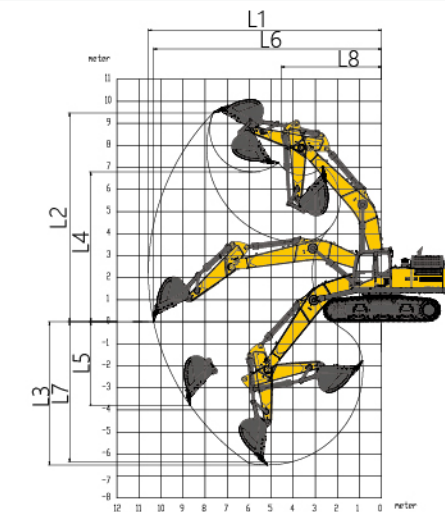
## Dimensions

Item		Unit	Parameters
Apperance size	A Overall length	mm	11805
	B Overall width	mm	3582
	C Overall height	mm	3890
	D Width of platform	mm	3095
	E Track length	mm	5353
	F Overall width of chassis	mm	3582
	G Track shoe width	mm	600
	H Wheel base of crawler	mm	4292
	I Track gauge	mm	2750
	J Counterweight clearance	mm	1324
	K Minimum ground clearance	mm	519
	L Minimum tail swing radius	mm	3800
	M Track height	mm	1198



## Working Range

Item		Unit	Parameters
Working scope	A Max. digging height	mm	9855
	B Max. dumping height	mm	6890
	C Max. digging depth	mm	7000
	D Maximum depth cut for 2240mm(8 ft) level bottom	mm	6900
	E Maximum vertical wall digging depth	mm	4500
	F Max. digging radius	mm	10855
	G Min. swing radius	mm	4580



## Lifting Capacity

Lifting point height (m)	Rated lift capacity – Straight ahead (back) (kg)						Rated lift capacity – over-side (kg)					
	Lifting point radius (m)					Lifting capacity at maximum radius	Lifting point radius (m)					Lifting capacity at maximum radius
	3	4.5	6	7.5	9		3	4.5	6	7.5	9	
7.5				*11535		*11160				9997		9356
6			*13709	*12162		*11066			*13709	9873		7734
4.5		*19930	*15229	*12827		*11365		*19930	13200	9551		6863
3			*16828	*13581	*11639	10899			12485	9167	7081	6417
1.5			*17867	*14129	11582	10752			11947	8856	6919	6287
Ground		*23564	*17894	*14139		11076		17355	11594	8641		6434
-1.5	*17060	*21632	*16935	*13355		*11404	*17060	17428	11533	8575		6944
-3	*21777	*18419	*14732	*11188		*11023	*21777	17642	11666	8727		8085
-4.5		*10327	*10327			*9709		*13347	*10327			*9709

Capacities marked with an asterisk(\*) are limited by hydraulic capacities.





Machmall.com is an electromechanical product platform officially launched by XCMG, aiming to provide global customers with a complete set of high-quality construction machinery solutions and supporting equipment.

Xuzhou Construction Machinery Group Co., Ltd. (XCMG Group), founded in 1943, is the fourth largest worldwide construction machinery manufacturer and the largest in China with products covering 183 countries and regions.

XCMG have 12 complete solutions: Crane lifting, Mining Construction, Earth-moving Solutions, Road Machinery, Concrete Equipment, Tunnel and Underground Space Construction, Mobile Elevating Work Platform (MEWP), Piling and Non-excavation Equipment, Transportation Equipment, Environmental Sanitation Equipment, Firefighting, Safety and Emergency Rescue

徐工徐工，助您成功

— XCMG for your success —



<https://www.machmall.com/>



[machmall@xcmg.com](mailto:machmall@xcmg.com)



008618652183963  
86-516 8773 9797

